

Contents

- 3 Removing the transport screws
- 3 Placement
- 4 Connections
- 7 Power supply
- 8 Audio/video system setup
- 9 Maintenance

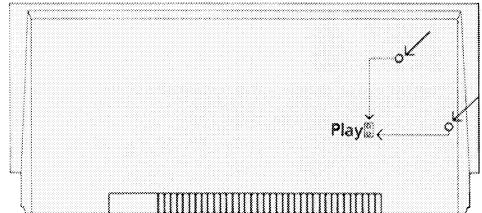
Removing the transport screws

The Beocenter is provided with two screws on the base which protect the compact disc unit suspension during transport.

These screws must be loosened before you can operate it.

To gain access to the screws, carefully turn the Beocenter upside down. Remove the two screws with a screwdriver and place them in the two holes marked PLAY for safekeeping.

If you ever have to transport the Beocenter, we strongly recommend that you reinsert the transport screws in the holes marked TRANSPORT.



Placement

The Beocenter must be placed on a firm, horizontal surface.

Do not obstruct the ventilation apertures in any way. Avoid placing it in direct sunlight, near radiators or other sources of heat.

See Beosystem 9500 user's guide for detailed operating instructions.

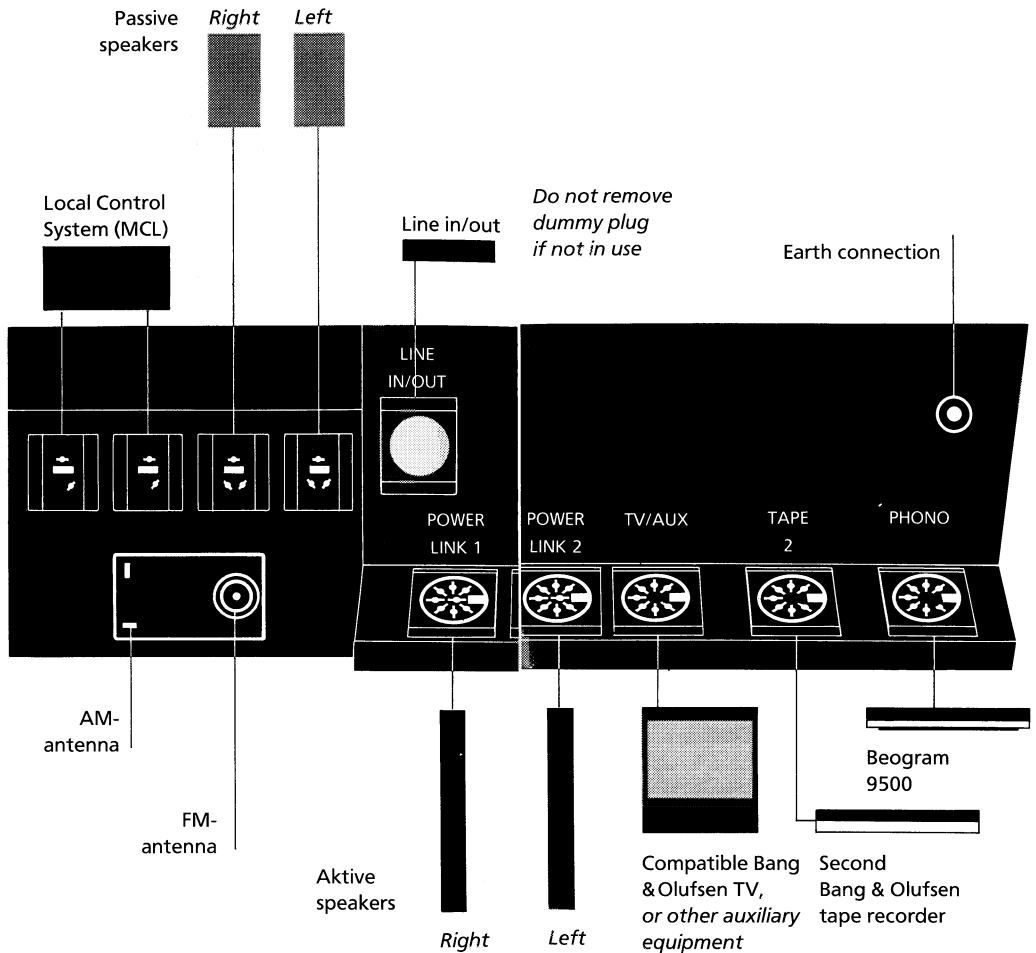
Connections

Connect loudspeakers, antennae, and the other units in the Beosystem (if any) to the Beocenter **before** connecting it to the mains supply.

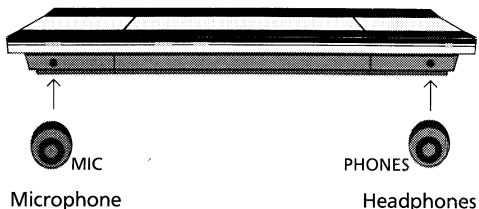
To gain access to the sockets, lift up the hinged grille at the rear.

The sockets marked **POWER LINK 1** and **POWER LINK 2** are for connecting active loudspeakers with the Power Link facility, for example the Beolab Penta.

Please refer to the loudspeaker manual for further details about how to set up the loudspeakers ready for use.



The two sockets underneath the Operation Panel enable you to connect a microphone and headphones.



Mono microphone

Use the socket marked MIC on the left.

You can use the Beocenter as a microphone amplifier:

press **AUX**
then **8**

To record from the microphone:

press **AUX**
then **8**
then **2 x Record**

Headphones

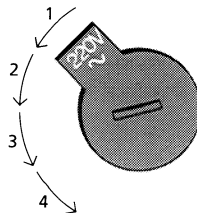
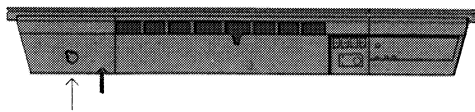
Use the socket marked PHONES on the right.

Power supply

Before connecting the Beocenter to the mains, check that the mains voltage switch on the rear panel is set to the position corresponding to the voltage supply in your country:

220V, 130V, 240V or 110V

*If for any reason you have to set the switch to another position, **remember to disconnect the Beocenter from the mains beforehand.** Use a screwdriver or a coin to turn the switch.*



- 1: 220V
- 2: 130V
- 3: 240V
- 4: 110V

Audio/video system setup

If you have connected a compatible Bang & Olufsen TV to the Beocenter 9500, you can use the Beolink 5000 to remote control both the TV and the Beosystem 9500.

If the Beosystem 9500 and the TV are placed in separate rooms, you will have to reprogram them for this setup (called an option 2 setup) so that you can operate your Beosystem 9500 via the TV and vice versa.

To do so, switch them to the stand-by mode, then press SOUND, 2, STORE to reprogram the Beosystem, and press PICTURE, 2, STORE to reprogram the TV.

Note: To reprogram the Beosystem and the TV for the factory setup (option 1 setup), use the same programming procedure, but press 1 instead of 2.

Maintenance

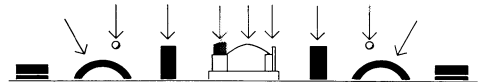
Surfaces

Use a soft, dry cloth to wipe off the Beocenter. Window cleaner on a dry cloth will do to remove any fingerprints and grease stains on the glass panels.

Never use alcohol or other solvents to clean any part of the Beocenter.

Tape deck

The tape path, i.e. tape heads, pinch rollers and other parts which the tape touches during play or recording, should be cleaned every now and then to prevent dust and fluff building up on them.

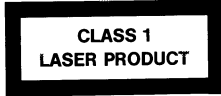


Use a cotton bud dipped in a fluid designed specially for this purpose.

The cleaning process must be carried out while the tape compartment is empty.

Caution

The use of any controls, adjustments or procedures other than those specified herein may result in hazardous radiation exposure.



The black and yellow label on the compact disc player serves as a warning that the apparatus contains a laser system and is classified as a class 1 laser product. In case of any trouble with the compact disc player, please contact your Bang & Olufsen dealer. The apparatus must be opened by qualified servicemen only.

The Beocenter fulfils the conditions stated in the EEC directive 82/499 concerning radio frequency interference.

International guarantee

This Bang & Olufsen product carries a guarantee against defects in workmanship and materials. The terms of the guarantee apply to the country of purchase but will be met by authorized Bang & Olufsen dealers in other countries. The guarantee period applying to the country of purchase takes priority over guarantee periods applying in other countries, even where differences exist.

In order to obtain service under this guarantee, a certificate stating the following information is required:

- Name of product and type number
- Serial number
- Date of purchase
- Guarantee period
- Dealer's or supplier's signature

Special note for the UK market

IMPORTANT

The wires in the mains lead supplied with this apparatus are coloured in accordance with the following code:

Blue: Neutral

Brown: Live

As the colours of the wires in the mains lead may not correspond with the coloured markings identifying the terminals in your unit, proceed as follows:

The wire which is coloured blue must be connected to the terminal which is marked with the letter N or coloured black.

The wire which is coloured brown must be connected to the terminal which is marked with the letter L or coloured red.

Ensure that your equipment is connected correctly. If you are in any doubt, consult a qualified electrician.